

Redesigned PSAT/NMSQT

Presented by the OHS School Counseling Department

February 10, 2016

PSAT/NMSQT Score Review Night

- Background
- How to access scores online
- Understanding the PSAT scores
- Using scores to prepare for the SAT

Background

- ▶ The PSAT is a practice test for the SAT
- ▶ This year the PSAT and SAT have been redesigned
- ▶ This year the State of Connecticut has adopted the SAT as the statewide assessment for all juniors
- ▶ Juniors are also considered for the National Merit Scholarship Program
- ▶ Both Sophomores and Juniors benefit from the practice the PSAT provides for the SAT and specific feedback to improve performance

Accessing Scores online

- ▶ If students provided their email address on their PSAT/NMSQT answer sheet, they should have received an email from the College Board between Jan. 7th and 9th alerting them to scores being available electronically.
- ▶ That email included instructions on how to access online scores as well as an access code.
- ▶ Students having trouble accessing their scores online should notify their school counselor

How Do I Access My Online PSAT/NMSQT® Scores and Reports?

1. Log in to an existing College Board account or create a new one at studentscores.collegeboard.org

The screenshot shows the CollegeBoard website interface. At the top is a navigation bar with links for CollegeBoard, SAT, AP, College Planning, College Search, Store, and More, along with a search bar. Below this is the 'My Score Reports' section, which is divided into two main areas: 'Sign In' and 'Create Your Student Account'.

Sign In

Username

Password

Sign In **Sign Up**

[Forgot username or password?](#)

Access your SAT Suite of Assessment scores with personalized feedback, practice, college planning and career exploration resources.

- See all your scores and if you are on track for college readiness
- Detailed explanations of skills required to be college re
- Send your scores to [Khan Academy](#) for personalized practice recommendations
- Search for colleges that fit your needs
- Start on your scholarship and college financial aid plan
- Take a personality test to find majors and careers fit for you
- Get feedback on your readiness for AP courses

Create Your Student Account

This one account is for everything, including **SAT, AP, PSAT/NMSQT, CLEP,** and **BigFuture** activities, so provide complete and accurate information.

* = Required

General Student Information

First (given) name: *

Middle initial:

Last name (surname): *

How Do I Access My Online PSAT/NMSQT® Scores and Reports? (cont.)

1. Log in to Your Account

The screenshot shows the 'My Score Reports' section of the CollegeBoard website. It features a 'Sign In' form with fields for 'Username' and 'Password', and buttons for 'Sign In' and 'Sign Up'. To the right of the form, there is a list of benefits for logging in, such as seeing scores, getting personalized feedback, and searching for colleges.

My Score Reports

Sign In

Username
Password

[Sign In](#) [Sign Up](#)

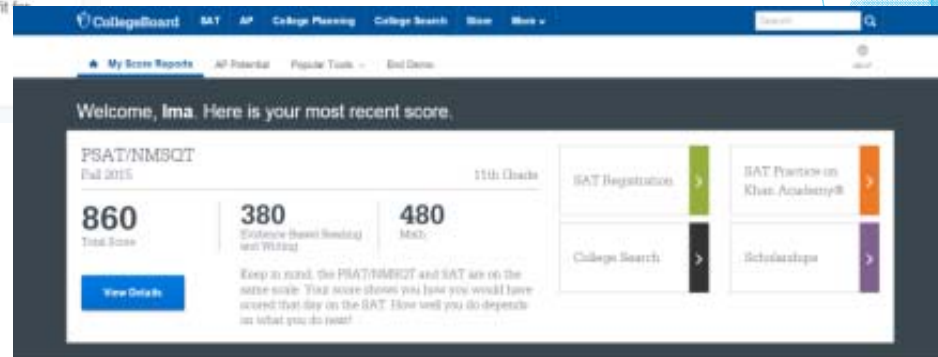
[Forgot username or password?](#)

Access your SAT Suite of Assessment scores with personalized feedback, practice, college planning and career exploration resources.

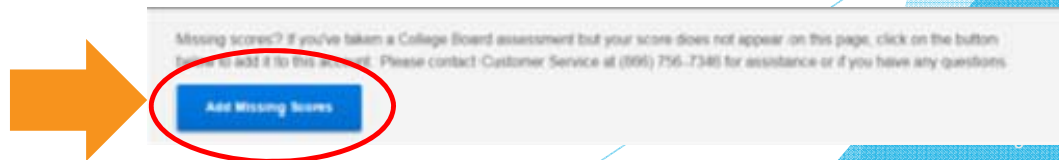
- See all your scores and if you are on track for college readiness
- Detailed explanations of skills required to be college ready
- Send your scores to Khan Academy® for personalized practice recommendations
- Search for colleges that fit your needs
- Start on your scholarship and college financial aid plan
- Take a personality test to find majors and careers fit for you
- Get feedback on your readiness for AP courses

2. Select PSAT/NMSQT Scores

Or



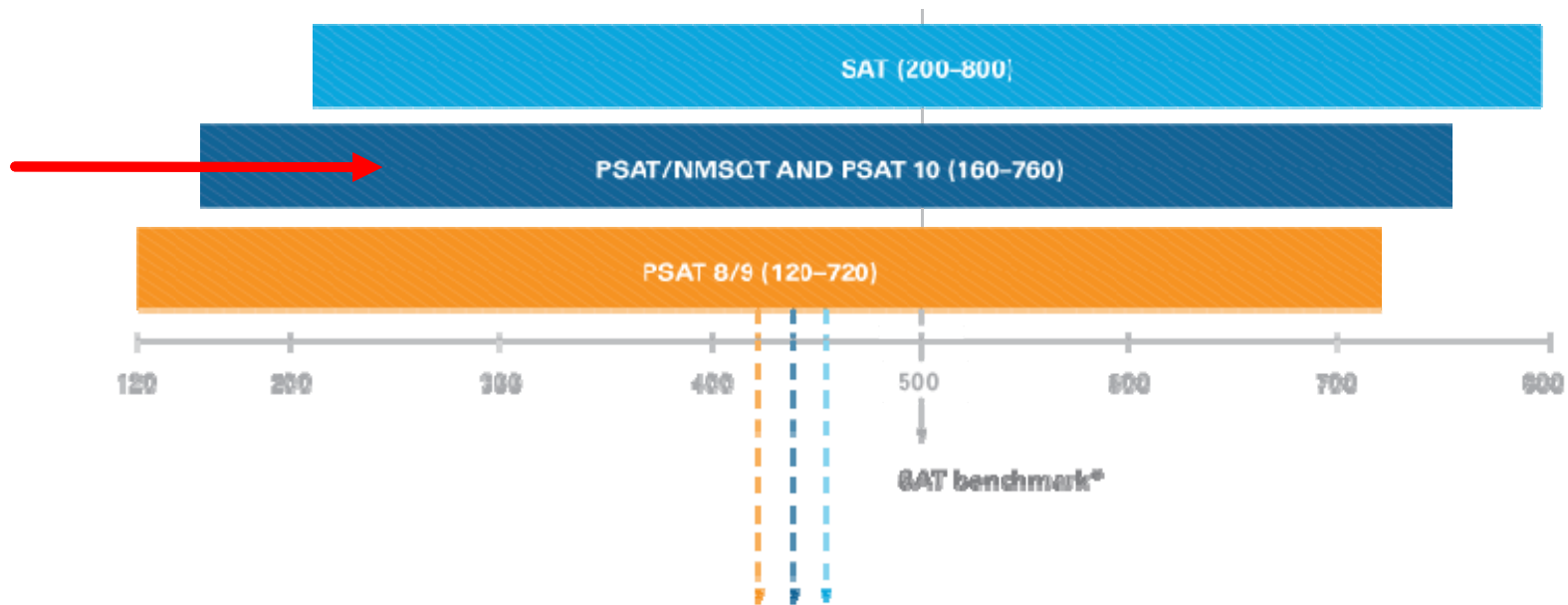
3. Use “Missing Scores” to locate scores



Scoring compared to Redesigned SAT

Assessment	Evidence Based Reading/Writing	Math	Essay	Total Score Possible
PSAT	760	760	<i>No essay section</i>	1520
SAT	800	800	<i>essay scored separately</i>	1600

How Does the New PSAT/NMSQT Connect to the New SAT?



Grade-level benchmarks will indicate if students are making "on target" progress toward the SAT benchmark.

The PSAT/NMSQT[®] Score Report

- ▶ Contains information to help you improve your academic skills.
- ▶ Lists skills that you have the best chance of improving with additional work.
- ▶ Connects to personalized practice recommendations on Khan Academy.

What Will I Learn About My Scores?

CollegeBoard SAT AP College Planning College Search Store More

Search

My Score Reports AP Potential Popular Tools End Demo HELP

Welcome, Ima. Here is your most recent score.

PSAT/NMSQT
Fall 2015 11th Grade

860
Total Score
[View Details](#)

380
Evidence-Based Reading and Writing

480
Math

Keep in mind, the PSAT/NMSQT and SAT are on the same scale. Your score shows you how you would have scored that day on the SAT. How well you do depends on what you do next!

SAT Registration > SAT Practice on Khan Academy® >
College Search > Scholarships >

How Do I See My Detailed Scores?

My Score Reports | Full Reports | AP Potential | Popular Tools | End Demo | HELP

Score Report for PSAT/NMSQT, Fall 2015

Download Report

Report Details | Test Questions | Skills Insight | NMSC Selection Index

Your Total Score

860 | 320 to 1520

Score Range: 820-900

Keep in mind, the PSAT/NMSQT and SAT are on the same scale.

Your score shows you how you would have scored that day on the SAT.¹ How well you do depends on what you do next!

1. Beginning in March 2016

29th Nationally Representative Sample Percentile

Your percentile indicates the percentage of a nationally representative group of 11th grade U.S. students who would have had scores at or below your score. The average score for the nationally representative group is 969.

25th Your PSAT/NMSQT User Percentile - National

Your percentile indicates the percentage of a typical group of 11th grade College Board U.S. test takers who would have had scores at or below your score. The average score for the 11th grade College Board PSAT/NMSQT typical group is 967.

Your Evidence-Based Reading and Writing Score

380 | 160 to 760

Score Range: 350-410

16th Nationally Representative Sample Percentile

Your percentile indicates the percentage of a nationally representative group of 11th grade U.S. students who would have had scores at or below your score. The average score for the 11th grade College Board PSAT/NMSQT typical group is 489.

Your Math Score

480 | 160 to 760

Score Range: 450-510

49th Nationally Representative Sample Percentile

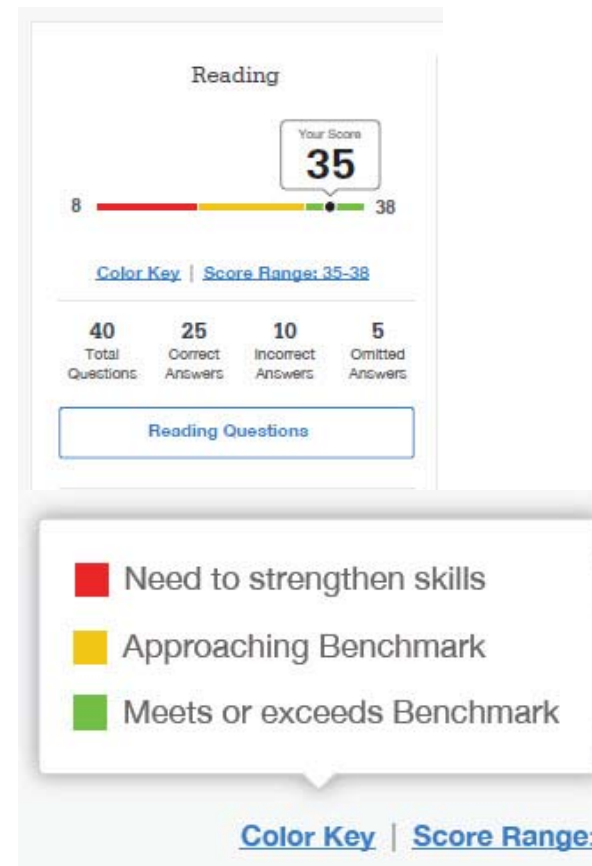
Your percentile indicates the percentage of a nationally representative group of 11th grade U.S. students who would have had scores at or below your score. The average score for the nationally representative group is 489.

45th Your PSAT/NMSQT User Percentile - National

Your percentile indicates the percentage of a typical group of 11th grade College Board U.S. test takers who would have had scores at or below your score. The average score for the 11th grade College Board PSAT/NMSQT typical group is 496.

How Did My Score Measure Against College Readiness Benchmarks?

- ▶ Section, test, and subscores all report scores in performance zones which indicate whether you are on track for success in the first year of college.
- ▶ For section scores
 - ▶ **Need to Strengthen Skills** = below grade-level benchmark by more than one year
 - ▶ **Approaching Benchmark** = below grade-level benchmark by one year or less
 - ▶ **Meets or exceeds Benchmark** = at or above grade-level benchmark
- + For test scores and subscores,
 - Red, yellow, and green ranges reflect areas of strengths and weaknesses compared to the typical performance of students



Linking College Board and Khan Academy

[Linking Video](#)

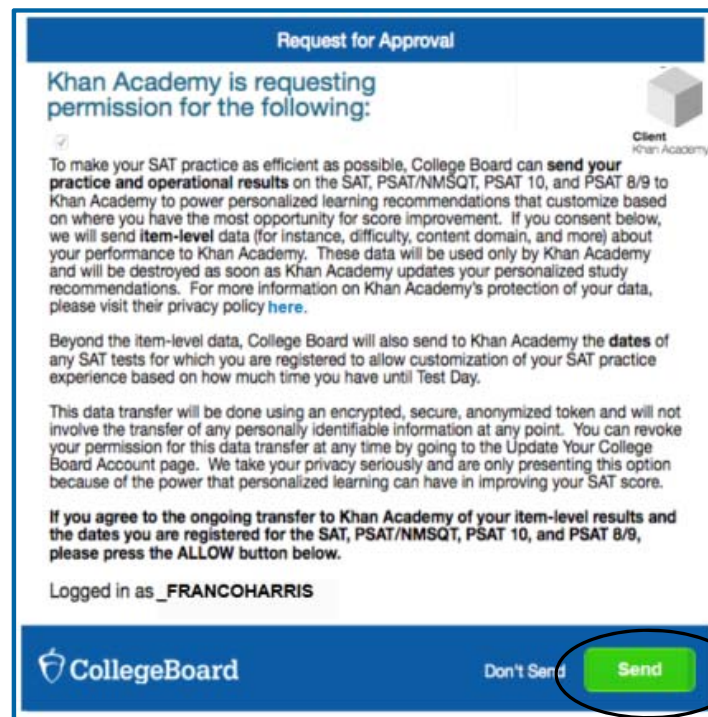
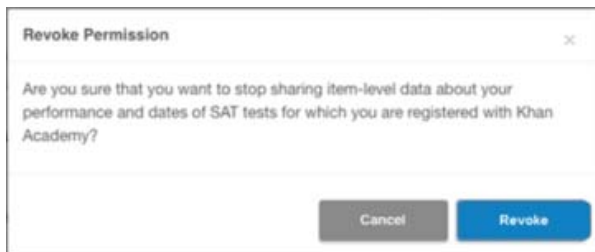


What steps will I follow to link my College Board account to Khan Academy®?

- ▶ **Step 1:** Log in or create a Khan Academy Account
- ▶ **Step 2:** When prompted; agree to link your Khan Academy and College Board account. You will then be directed to collegeboard.org.
- ▶ **Step 3:** Sign in or create a College Board Account
- ▶ **Step 4:** When prompted; hit “Send” to authorize the account linking
- ▶ **Step 5:** Start practicing on Official SAT practice on Khan Academy!

How can I Link my College Board and Khan Academy® Accounts?

- ▶ After successfully logging in to your College Board account, you will be asked to authorize the account linking.
- ▶ After clicking “Send,” you will be redirected to SAT practice on the Khan Academy site.
- ▶ You can remove the link at any time, by clicking on “Revoke” which is found in College Board account settings.



Resources

- ▶ To access PSAT scores online through a College Board student account and/ or to create a student account, please visit: studentscores.collegeboard.org
- ▶ For personalized resources aligned to the SAT[®] Suite of Assessments (including the PSAT/NMSQT[®]), please visit: khanacademy.org/sat
- ▶ To find out more about National Merit Scholarship Corporation and its scholarships, visit: nationalmerit.org/nmsp.php